

**CinemaKing**

**Smart LED screen**

CinemaKing

CinemaKing

CinemaKing



## I Contents

1

Smart LED display and control  
folding & lifting screen

**LA Series**

2

Smart LED Ultra-thin Commercial  
Display Screen

**XC Series**

3

Smart LED Commercial  
Display Screen

**E Series**

4

Smart LED Ultra-thin Commercial  
Display Screen

**X Series**

5

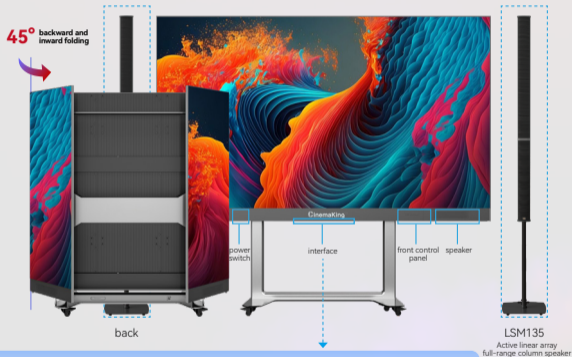
Peripheral Accessories  
(Optional)

## I Application scenarios

It is widely used in government and enterprise meetings, information release, exhibition and display, education and training, hotels, shopping malls, entertainment clubs, road shows and other fields.

## Smart LED Display and Control Folding & Lifting Screen LA Series

LA135G (135")



### Product introduction

The product appearance is black, standard 2K (1920 x 1080), ultra-thin design (25mm), supports U disk hot plug, plug and play. Built-in boot tutorial guide, customizable boot screen, OTA online upgrade, support wireless screen mirroring (up to nine devices can be mirrored simultaneously), multi-display (PIP, PBP), both sides of the screen can be folded back, the screen base can achieve 65cm anti-collision lifting. Bluetooth remote control can be used to control the screen, app control panel can be used for lifting operations, the screen can be folded and transported into the elevator as a whole, one-button switch, 0.5w standby power consumption, central control intelligent terminal control, customized full-band speakers.

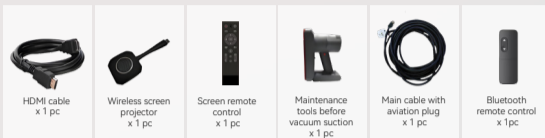
### LSM135 active linear array full-range loudspeakers with an optional built-in DSP processing module.

- Standard 2K (1920 x 1080) HD image, ultra-thin design (25mm) worldwide, 6000:1 high contrast, fine image quality, low brightness and high gray, 8-level brightness adjustment;
- It adopts Android 9.0 system, equipped with quad-core CPU, ultra-high-performance GPU, 4G plus 64G large memory, supports U disk hot plug, plug and play, easy to operate;
- Built-in boot teaching guide, customizable boot screen, main interface background, diverse styles, suitable for various scenarios, OTA online upgrade, continuously optimizing the user experience;
- Support wireless screen mirroring (up to nine devices can be mirrored simultaneously), multiple displays on one screen (PIP, PBP), and multiple signal source inputs;
- It can be connected to external multimedia devices (cameras, speakers, etc.) and supports the installation of video conferencing software to achieve conference functions. It has a high refresh rate and is suitable for broadcast-quality photography and video recording;
- The industry's first backward folding technology provides comprehensive protection for the screen. The base can be lifted and lowered to prevent collisions, and supports Bluetooth remote control, app, and control panel for lifting and lowering operations;
- The box is made of high-quality die-cast aluminum, and the base can achieve 65cm anti-collision lifting and folding into the elevator for transportation. It can be opened in 2 minutes, with single-wire load, one-button switch, 0.5W standby power consumption, and supports remote control and intelligent terminal control through the central control system, making it simple and convenient;
- Customized full-band loudspeaker, 82dB high sensitivity, 120Hz box tuning, 20-20KHz ultra-wide frequency response range, providing extraordinary auditory experience;
- Rich interface compatibility: USB interface, HDMI input and output, RJ45 network port, Bluetooth remote control, etc., support WiFi, Bluetooth, Ethernet and other network transmission methods.

## Technical parameters

<b>Video interface</b>	HDMI1.4 IN*2, HDMI2.0 IN*2, HDMI2.1 IN*1, HDMI2.0 OUT*1, USB2.0*2, USB3.0*1, Type C IN 4K*1	<b>Contrast ratio</b>	6000: 1
<b>Audio interface</b>	3.5mm audio output interface Audio OUT*1, optical audio output interface S/PDIF OUT*1, built-in 2*20W full-range audio	<b>Color gamut</b>	≥110% NTSC
<b>Control interface</b>	Infrared (IR IN) × 1, Bluetooth × 1, WiFi × 2, RJ45 × 1, RS232 × 1, infrared and Bluetooth remote control	<b>Color coordinates</b>	Standard (0.2953, 0.3047) adjustable
<b>Pixel pitch (mm)</b>	1.5625	<b>Color temperature (K)</b>	Standard 8000, adjustable from 3200 to 12000
<b>Pixel composition</b>	SMD1212	<b>Horizontal/vertical viewing angle</b>	160°/160°
<b>Pixel density(dots/m<sup>2</sup>)</b>	409600	<b>Chromaticity uniformity</b>	±0.005
<b>Module size (mm)</b>	300 x 168.75	<b>Brightness uniformity</b>	≥95%
<b>Surface technology</b>	GOB	<b>Single-point brightness correction</b>	support
<b>Module composition</b>	10 columns x 10 rows	<b>Single-point chromaticity correction</b>	support
<b>Screen resolution</b>	1920 x 1080	<b>Average power consumption of the screen (W/set)</b>	840
<b>Box material</b>	Die cast aluminum	<b>Maximum power consumption of the screen (W/set)</b>	2800
<b>Installation method</b>	Standard Lift Base	<b>Power supply requirements for modules</b>	DC4.2V
<b>Maintenance method</b>	Full front maintenance	<b>Power supply requirements for the screen</b>	AC100~240V, 50/60Hz
<b>Grayscale (Bit)</b>	14	<b>System version</b>	Android 9.0
<b>White balance brightness (nit)</b>	100~600 (adjustable from level 8)	<b>Operating memory/storage memory</b>	4G / 64G
		<b>Refresh rate (Hz)</b>	2880~3840
		<b>Drive mode</b>	PWM constant current drive
		<b>Screen and packaging dimensions (mm)</b>	1962 x 1835 x 760 (folding down with base) 3010 x 2612 x 760 (Expand and Raise with base)
		<b>Display size (mm)</b>	3000 x 1687.5
		<b>Inner empty size of outer packaging (mm)</b>	1867 x 1864 x 848
		<b>Overall dimensions (mm)</b>	2045 x 1900 x 884 including the height of casters
		<b>Weight of screen and packaging</b>	125kg
		<b>Weight of the bracket</b>	130kg
		<b>Weight of the aviation case</b>	160kg

## Accessories

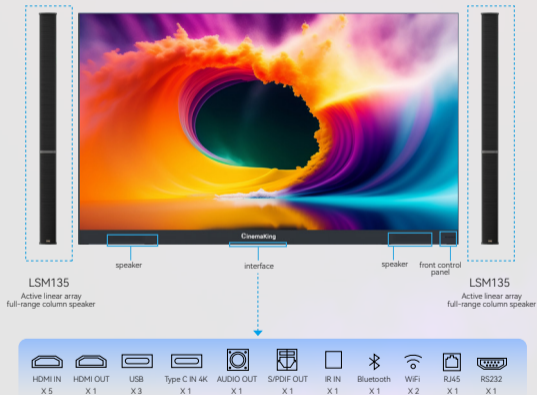


## LSM135 Active linear array full-range column speaker(Optional)



## Smart LED Ultra-thin Commercial Display Screen XC Series

XC-135G (135")



### Product introduction

The product appearance is black, and the module process is **COB**. The display effect is 2K (1920 x 1080), ultra-thin design (25mm), refresh rate above 3840Hz, front maintenance, standard wall-mounted installation, customized full-band speaker, support for wireless screen mirroring (up to nine devices can be mirrored simultaneously), built-in boot-up tutorial guide, OTA online upgrade, and built-in intelligent dehumidification software.

#### LSM135 active linear array full-range loudspeakers with an optional built-in DSP processing module.

- Standard 2K (1920 x 1080) HD image, global ultra-thin design (25mm), high contrast ratio of 6000:1, fine image quality, low brightness and high grayscale, 8-level brightness adjustment;
- It adopts Android 9.0 system, equipped with quad-core CPU, ultra-high-performance GPU, 4G plus 64G large memory, supports hot plugging of U disk, plug and play, and easy to operate;
- Built-in boot tutorial guide, customizable boot screen, main interface background, diverse styles, suitable for various scenarios, OTA online upgrade, continuous optimization of user experience;
- Support wireless screen mirroring (up to nine devices can be mirrored simultaneously), multi-display (PIP, PBP), Multi-signal source input;
- It can be connected to external multimedia devices (cameras, speakers, etc.) and supports the installation of video conferencing software to achieve conference functions. It has a high refresh rate and is suitable for broadcast-quality photography and video recording;
- A variety of floor stands are available, supporting horizontal wall mounting, vertical wall mounting, double-spliced seamless wall mounting for expanding the screen, hidden installation of the bottom beam, built-in intelligent dehumidification software, and a variety of dehumidification options;
- Single-line with load, one-button switch, 0.5W standby power consumption, support for remote control, intelligent terminal control in the central control, simple and convenient;
- Custom-made full-band speaker, boasting a high sensitivity of 82dB, a 120Hz cabinet tuning, and an ultra-wide frequency response range of 20-20KHz, delivering an exceptional listening experience;
- Rich interface compatibility: USB interface, HDMI input and output, RJ45 network port, Bluetooth remote control, etc., supporting multiple network transmission methods such as WiFi, Bluetooth, and Ethernet.

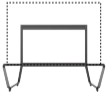
## Technical parameters

<b>Video interface</b>	HDMI1.4 IN × 2, HDMI2.0 IN × 2, HDMI2.1 IN × 1, HDMI2.0 OUT × 1, USB2.0 × 2, USB3.0 × 1, Type C IN 4K × 1	<b>Color gamut</b>	≥110% NTSC
<b>Audio interface</b>	3.5mm audio output interface Audio OUT × 1, optical audio output interface S/PDIF OUT × 1, built-in 2 × 20W full-range audio	<b>Color coordinates</b>	Standard (0.2953, 0.3047) adjustable
<b>Control interface</b>	IR IN × 1, Bluetooth × 1, WiFi × 2, RJ45 × 1, RS232 × 1, infrared and Bluetooth remote control	<b>Color temperature (K)</b>	Standard 8000, 3200-12000 adjustable
<b>Pixel pitch (mm)</b>	1.5625	<b>Horizontal/vertical viewing angle</b>	160°/160°
<b>Pixel composition</b>	1R1G1B	<b>Chromaticity uniformity</b>	≤0.005
<b>Module resolution(dots)</b>	96 × 108	<b>Luminance uniformity</b>	≥95%
<b>Module size (mm)</b>	150 × 168.75	<b>Single-point brightness correction</b>	support
<b>Module composition</b>	10 columns × 10 rows	<b>Average power consumption of the support screen (W/set)</b>	840
<b>Module surface process/hardness</b>	Process COB, matte / hardness 4H	<b>Maximum power consumption of the screen (W/set)</b>	2800
<b>Screen resolution</b>	1920 × 1080	<b>Module power supply requirements</b>	DC42V
<b>Display size (mm)</b>	3000 × 1687.5	<b>Power supply requirements for the screen</b>	AC100-240V, 50/60Hz
<b>Refresh rate (Hz)</b>	2880-3840	<b>System version</b>	Android 9.0
<b>Cabinet material</b>	Die cast aluminum	<b>Operating memor / storage memor</b>	4G / 64G
<b>Installation method</b>	Wall-mounted installation (standard configuration) / base (optional)	<b>Drive mode</b>	PWM constant current drive
<b>Maintenance method</b>	Full front maintenance	<b>Module packaging size (mm)</b>	Dimensions: 390 × 334 × 47, Inner dimensions: 376 × 328 × 41
<b>Grayscale (Bit)</b>	14	<b>Box packaging size (mm/China)(For reference only)</b>	Dimensions: 1905 × 892 × 860, Inner dimensions: 1853 × 840 × 675
<b>White balance brightness (nit)</b>	100-600	<b>Aviation case (mm/International) (For reference only)</b>	Inner dimensions: 1750 × 650 × 610, Dimensions: 1800 × 710 × 700 (excluding the height of the casters)
<b>Contrast ratio</b>	6000: 1	<b>Weight of screen and packaging(For reference only)</b>	Net weight of screen body: 120kg Weight of mobile base: 60kg (tripod base) Weight of wall-mounted component: 5kg/pc Weight of outer packaging: 90kg

## Accessories

		
HDMI cable x 1 pc	Wireless projector x 1 pc	Screen remote control x 1 pc
		
Maintenance tools before vacuum suction x 1 pc	Hanging pendant x 1 pc	Category 5e network cable x 1 pc

## Optional

	Smart screen floor-standing mobile bracket x 1pc
---	---

## Smart LED Commercial Display Screen

### E Series

E-135G (135")

E-163G (163")



### Product introduction

The product is black in appearance, with a display effect of 2K (1920 x 1080), a refresh rate of over 3840Hz, front maintenance, wall-mounted installation, U disk hot swapping, plug and play, support for wireless projection multi-screen networking interaction, multiple displays on one screen, support for remote control, mobile phone, tablet and other intelligent terminal remote control operations, one power cord, one-click switch, support for remote control, intelligent terminal control, simple and convenient.

#### LSM135/LSM163 active linear array full-range loudspeakers with an optional built-in DSP processing module.

- Support for hot plugging of USB flash drives, allowing for plug-and-play functionality. Color saturation is above 110%, with fine image quality and adjustable brightness;
- It adopts Android 11 system, with rich APP and strong scalability;
- Independently developed patented bracket design, adjustable height, suitable for more scenarios, medical silent roller, reliable and wear-resistant;
- The screen body adopts a segmented installation design, which improves installation efficiency by four times;
- Support wireless projection, multi-screen networking interaction, one screen for multiple displays, and support for remote control operations using smart terminals such as remote controls, mobile phones, and tablets;
- Support external high-definition cameras, speakers, and other devices for remote video conferencing, with refresh rates above 3840Hz, suitable for high-definition photography and video recording;
- Rich interface compatibility: USB interface, HDMI input and output, RJ45 network port, Bluetooth remote control, etc;
- Support multiple network transmission modes such as WiFi, Bluetooth, and Ethernet;
- User-level installation and maintenance, no need for post-maintenance channels, secondary decoration, steel structure, support for wall-mounted or mobile vertical installation;
- A power cord, one-button switch, support for remote control, intelligent terminal control, simple and convenient.

## Technical parameters

### E-135G

Video interface	HDMI x 2 (1 input and 1 output), USB 3.0 x 1, USB 2.0 x 3	
Audio interface	3.5mm audio interface Audio x1, SPDIF OUT x 1	
Control interface	Infrared (IR IN) x 1, Bluetooth x 1, WiFi x 1, infrared and Bluetooth remote control, RS232 interface	
Pixel pitch (mm)	1.5625	1.875
Pixel composition	1R1G1B SMD1212	1R1G1B SMD1515
Pixel density (dots/m <sup>2</sup> )	409600	284444
Module size (mm)	300 x 168.75	300 x 168.75
Module composition	10 columns x 10 rows	10 columns x 10 rows
Screen resolution	1920 x 1080	
Refresh rate (Hz)	≥3840	
Cabinet material	Die cast aluminum	
Installation method	Wall-mounted installation (standard) / vertical base (optional)	
Maintenance method	Full front maintenance	
Grayscale (Bit)	14	
White balance brightness (nit)	100-500	
Contrast ratio	6000: 1	
Color gamut	≥110% NTSC	
Color coordinates	Standard (0.2953, 0.3047) adjustable	
Color temperature (K)	Standard 8000, adjustable from 3200 to 12000	
Horizontal/vertical viewing angle	160°/140°	
Chromaticity uniformity	≥0.005	
Brightness uniformity	≥95%	
Single-point brightness correction	support	
Average power consumption of the support screen (W/set)	555	800
Maximum power consumption of the screen (W/set)	1850	2665
Power supply requirements for modules	DC4.2V	
Power supply requirements for the screen	AC100-240V, 50/60Hz	
System version	Android 11	
Operating memory/storage memory	2G / 32G (expandable SD card)	
Drive mode	PWM constant current drive	

### E-163G

### E-135G

Module packaging size (mm)	Dimensions: 353 x 394 x 65.5 Inner dimensions: 327 x 385 x 58.5	Dimensions: 353 x 394 x 65.5 Inner dimensions: 327 x 385 x 58.5
Box packaging size (mm)(For reference only)	Dimensions: 1905 x 892 x 860, Inner dimensions: 1773 x 233 x 675 + 1773 x 354 x 675 + 1773 x 233 x 675	Dimensions: 2242 x 892 x 860, Inner dimensions: 2110 x 233 x 675 + 2110 x 354 x 675 + 2110 x 233 x 675
Weight of screen and packaging (For reference only)	Net weight of screen body: 130kg Weight of mobile base: 60kg Weight of wall-mounted accessories: 5kg/pc Weight of outer packaging: 90kg	Net weight of screen body: 170kg Weight of mobile base: 65kg Weight of wall-mounted accessories: 6kg/pc Weight of outer packaging: 169kg

### E-163G

## Accessories



HDMI cable  
x 1 pc

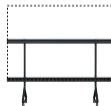


Screen remote control  
x 1 pc



Hanging pendant  
x 1 pc

## Optional



Smart screen four-standing mobile bracket x 1pc

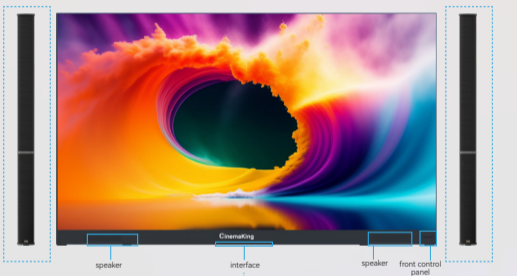


## Smart LED Ultra-thin Commercial Display Screen

### X Series

X-135G (135")

X-163G (163")



LSM135/LSM163  
Active linear array  
full-range column speaker

LSM135/LSM163  
Active linear array  
full-range column speaker



### Product introduction

The product appearance is black, the display effect is 2K (1920 x 1080), ultra-thin design (25mm), refresh rate above 3840Hz, front maintenance, standard wall-mounted installation, customized full-band speaker, support for wireless screen mirroring (up to nine devices can be mirrored simultaneously), built-in boot-up tutorial guide, OTA online upgrade, and built-in intelligent dehumidification software.

#### LSM135/LSM163 active linear array full-range loudspeakers with an optional built-in DSP processing module.

- Standard 2K (1920 x 1080) HD image, global ultra-thin design (25mm), high contrast ratio of 6000:1, fine image quality, low brightness and high grayscale, 8-level brightness adjustment;
- It adopts Android 9.0 system, equipped with quad-core CPU, ultra-high-performance GPU, 4G plus 64G large memory, supports hot plugging of U disk, plug and play, and easy to operate;
- Built-in boot tutorial guide, customizable boot screen, main interface background, diverse styles, suitable for various scenarios, OTA online upgrade, continuous optimization of user experience;
- Support wireless screen mirroring (up to nine devices can be mirrored simultaneously), multi-display (PIP, PBP), Multi-signal source input;
- It can be connected to external multimedia devices (cameras, speakers, etc.) and supports the installation of video conferencing software to achieve conference functions. It has a high refresh rate and is suitable for broadcast-quality photography and video recording;
- A variety of floor stands are available, supporting horizontal wall mounting, vertical wall mounting, double-spliced seamless wall mounting for expanding the screen, hidden installation of the bottom beam, built-in intelligent dehumidification software, and a variety of dehumidification options;
- Single-line with load, one-button switch, 0.5W standby power consumption, support for remote control, intelligent terminal control in the central control, simple and convenient;
- Custom-made full-band speaker, boasting a high sensitivity of 82dB, a 120Hz cabinet tuning, and an ultra-wide frequency response range of 20-20KHz, delivering an exceptional listening experience;
- Rich interface compatibility: USB interface, HDMI input and output, RJ45 network port, Bluetooth remote control, etc., supporting multiple network transmission methods such as WiFi, Bluetooth, and Ethernet.

## Technical parameters

### X-135G

### X-163G

Video interface	HDMI1.4 IN × 2, HDMI2.0 IN × 2, HDMI2.1 IN × 1, HDMI2.0 OUT × 1, USB2.0 × 2, USB3.0 × 1, Type C IN 4K × 1	
Audio interface	3.5mm audio output interface Audio OUT × 1, optical audio output interface S/PDIF OUT × 1, built-in 2 × 20W full-range audio	
Control interface	IR IN × 1, Bluetooth × 1, WiFi × 2, RJ45 × 1, RS232 × 1, infrared and Bluetooth remote control	
Pixel pitch (mm)	1.5625	1.875
Pixel composition	SMD1212	SMD1515
Pixel density (dots/m <sup>2</sup> )	409600	284089
Module size (mm)	300 x 168.75	300 x 168.75
Module composition	10 columns x 10 rows	12 columns x 12 rows
Screen resolution	1920 x 1080	
Display size (mm)	3000 x 1687.5	3600 x 2025
Refresh rate (Hz)	2880-3840	
Cabinet material	Die cast aluminum	
Installation method	Wall-mounted installation (standard) / streamlined base (optional)	
Maintenance method	Full front maintenance	
Grayscale (Bit)	14	
White balance brightness (nit)	100-600 (8-level adjustable)	
Contrast ratio	6000 : 1	
Color gamut	≥110% NTSC	
Color coordinates	Standard (0.2953, 0.3047) adjustable	
Color temperature (K)	Standard (0.2953, 0.3047) adjustable	
Horizontal/vertical viewing angle	160°/160°	
Chromaticity uniformity	≤0.005	
Luminance uniformity	≥95%	
Single-point brightness correction	support	
Average power consumption of the support screen (W/set)	840	810
Maximum power consumption of the screen (W/set)	2800	2700
Module power supply requirements	DC4.2V	
Power supply requirements for the screen	AC100-240V, 50/60Hz	
System version	Android 9.0	
Operating memory/storage memory	4G / 64G	
Drive mode	PWM constant current drive	

## Technical parameters

### X-135G

### X-163G

#### Module packaging size (mm)

Dimensions: 390 x 334 x 47,  
Inner dimensions: 376 x 328 x 41

Dimensions: 390 x 334 x 47,  
Inner dimensions: 376 x 328 x 41

#### Box packaging size (mm/China)(For reference only)

Dimensions: 1905 x 892 x 860,  
Inner dimensions: 1853 x 840 x 675

Dimensions: 2242 x 892 x 860,  
Inner dimensions: 2190 x 840 x 675

#### Aviation case (mm/International) (For reference only)

Inner dimensions: 1750 x 650 x 610,  
Dimensions: 1800 x 710 x 700(excluding the height of the casters)

Inner dimensions: 2050 x 710 x 610,  
Dimensions: 2100 x 760 x 710(excluding the height of the casters)

#### Weight of screen and packaging (For reference only)

Net weight of screen body: 120kg  
Weight of mobile base: 60kg (tripod base)  
Weight of wall-mounted component: 5kg/pc  
Weight of outer packaging: 90kg

Net weight of screen body: 170kg  
Weight of mobile base: 65kg (tripod base)  
Weight of wall-mounted component: 5kg/pc  
Weight of outer packaging: 169kg

## Accessories



HDMI cable  
x 1 pc



Wireless  
projector  
x 1 pc



Screen remote  
control  
x 1 pc



Maintenance tools  
before vacuum  
suction x 1 pc

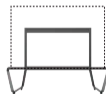


Hanging  
pendant  
x 1 pc



Category 5e  
network cable  
x 1 pc

## Optional



Smart screen floor-standing mobile  
bracket x 1pc

# LSM Active (DSP) Column Series

## LSM135/LSM163

Active linear array full-range column speaker

### Product introduction

Soundking's newly developed LSM active (DSP) column series has built-in professional digital DSP audio processors, power amplifiers, and other technologies, replacing the drawbacks of traditional column systems that require multiple complex device connections. Performance parameters have been set according to actual usage scenarios, allowing users to simply connect and use the system normally.

It is also the preferred solution for providing sound for 135"/163" LED displays, suitable for medium-to-high-end audio projects with high sound quality requirements, good bass performance, good voice clarity, and small installation space. It can be applied to large, medium, and small conference rooms, churches, classrooms, stations, exhibition halls, and other occasions.

### Product features

- Active sound column contains the necessary DSP processing module for sound reinforcement system;
- Support automatic matching of audio parameters under the preset program, high definition and large dynamic range;
- Digital power amplifier, high power, low distortion, excellent sound quality;
- Switching power supply design, light weight, stable performance, allowing 100V~240V wide power input;
- Equipped with professional fixed accessory brackets.



Back view  
Integration of  
processing and  
active amplifier  
modules

### Technical parameters

Model	LSM135 / LSM163	Bass Unit	6 x 3" Neodymium magnetic low-frequency loudspeaker/φ25mm voice coil/30W/4Ω
System type	Active linear array full-range column speaker	High frequency unit	1 x 1" Neodymium high-frequency compression driver/φ25mm voice coil/10W/8Ω
Frequency response (-10dB)	60Hz-20kHz	Box material	Aluminium alloy
Maximum sound pressure level (@1m)	121dB	Input signal connector	1 x XLR, 1 x PHOENIX(3P)
Input sensitivity	0dBu	Digital Network Control Interface	1 x PHOENIX(4P)/RS-485
Input impedance	10kΩ balanced	Power Supply	AC 100V ~ 240V
Rated power of power amplifier	7 x 60W / 4Ω	Product size (mm)	91 x 1836 x 124 / 91 x 2172 x 124
Coverage angle(H x V)	100° x 30°	Installation method	Mobile stand/wall-mounted stand (optional)
Crossover	2.5kHz	Net weight	10kg / 11kg

### Accessories



LSM135/LSM163 dedicated wall  
bracket

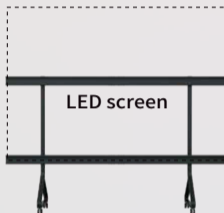
### Optional



SB318

LSM135 special customized  
mobile stand

## Floor-mounted Mobile Installation Bracket



Applicable to  
**E-135G / E-163G**  
Mobile bracket

It is made by high-strength steel integrated bending process, creating the best triangular force point, while creating a beautiful appearance, strengthening the overall rigidity of the screen bracket. The scratch-resistant metal paint coating on the surface provides better protection for the bracket.

### Product size

135": 1800(L) x 787(W) x 600mm (height from the bottom of the wheel to the bottom of the crossbeam)

Net weight: 61.3kg

163": 2400(L) x 787(W) x 600mm (height from the bottom of the wheel to the bottom of the crossbeam)

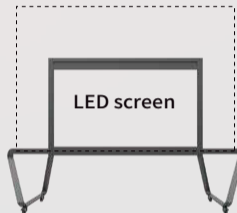
Net weight: 70.6kg

(The height is determined by the actual situation. See the instructions for details)

### Dimensions of the stent package

135": 2502 x 1062 x 170mm Gross weight: 73.8kg

163": 2502 x 1062 x 170mm Gross weight: 83.6kg



Applicable to  
**XC-135G/ X-135G/ X-163G**  
Mobile bracket

It is made by high-strength aluminum alloy profile integrated bending process, which minimizes the weight of the bracket and strengthens the overall rigidity of the screen bracket. The scratch-resistant metal coating on the surface plays a better role in protecting the bracket.

### Product size

135": 2400(L) x 809(W) x 654.8mm (height from the bottom of the wheel to the bottom of the crossbeam)

Net weight: 40kg

163": 3000(L) x 809(W) x 623mm (height from the bottom of the wheel to the bottom of the crossbeam)

Net weight: 46kg

(The height is determined by the actual situation. See the instructions for details)

### Dimensions of the stent package

135": 954 x 900 x 850mm Gross weight: 100kg

163": 2342 x 900 x 850mm Gross weight: 120kg

# Video Camera

## VC04U



### Product features

- Using the latest high-quality CMOS image sensor, it supports up to 3840x2160P30 video output;
- Using high-quality 4K ultra-wide-angle lens, the horizontal viewing angle is up to 110°;
- Support 3840x2160P30, 1920x1080P30, 1280x720P30 and 640x360P30 video formats;
- Support YUY2, NV12 video formats and MJPG, H264, H265 encoding and decoding;
- Support automatic frame selection based on intelligent image algorithms;
- Support EPTZ electronic cloud platform function;
- Support self-pickup, with a pickup distance of up to 5 meters;
- Embedded MIC audio input;
- Support standard UVC/UAC communication protocol.

### Application scenarios

It is suitable for office scenarios such as internal meetings and remote video discussions in small and medium-sized enterprises, as well as online classes and remote medical consultations that require real-time high-definition image transmission.

### Technical parameters

Image sensor	1/2.8" 4K CMOS, 8.46 million pixels
Maximum resolution	4KP30
Digital zoom	4 times
Focal length	f=2.1mm
Aperture	F2.2
Field of view angle	Diagonal 120°, horizontal 110°, vertical 87°
Video adjustment	Brightness, chroma, saturation, contrast, sharpness
white balance	automatic
Exposure control	automatic
Intelligent functions	Automatic Box Selection
Signal to noise ratio	≥50dB
Menu	support
EPTZ	support
Audio input	Built-in dual microphones, with a pickup distance of up to 5 meters
Pick up distance	5 meters
USB interface	1 x USB 3.0 Type-C
Video format	YUY2, NV12: Standard 3840 x 2160 downward compatible
Operating system support	Windows 7/8/10, MacOS, Android os, Linux
Conference software support	Zoom / Skype / DingTalk / Tencent Meeting / Google Meet / Teams / WebEx
Power waste	<2.5W
Power supply	(USB power supply), current ≤0.5A
Working temperature	0°C--40°C
Storage temperature	-20°C~ +60°C
Working humidity	10%RH~90%RH
Size (mm)	210 x 74 x 48
Body weight	≤0.3kg
Body color	black

## Multi-functional Page Turner SuperCue MINI



### Product features

- The multifunctional page turner makes collaborative office work unique and breaks through the technical barriers of synchronous page turning online and offline;
- High-intensity laser;
- More stable signal transmission, longer transmission distance, and stronger penetration ability;
- Using a rechargeable 7-cell high-capacity conical battery, it is more environmentally friendly, has longer battery life, and is easy to replace. The remote control provides a timing function, allowing the speaker to clearly see the current narration status;
- Multiple machines can be cascaded to perform more PC/MAC synchronous page turning (Professional Edition).

### Technical parameters

Business reporting and classroom teaching help speakers and teachers to turn pages freely and flexibly control the pace of presentation.

### Technical parameters

Communication technology	433MHz
Transmission distance	>100m
Transmission anti-interference	Unique communication frequency band, stronger anti-interference ability
Transmission delay	<20ms
Laser power	30MV
Ergonomics	Ergonomic design, more comfortable grip
Product positioning	More cost-effective professional products
Drive	Driver-free system, plug and play
Power Supply	Polymer lithium battery Power supply: USB power supply
Dimensions (mm)	86 x 51 x 17/ 60 x 22 x 11
weight	75g /20g

**CinemaKing**



Scan the QR code